

Vp

19 Hardwick Road  
, RG30 4LH

Offers in excess of £465,000 Freehold

[VillageProperties.co.uk](http://VillageProperties.co.uk)



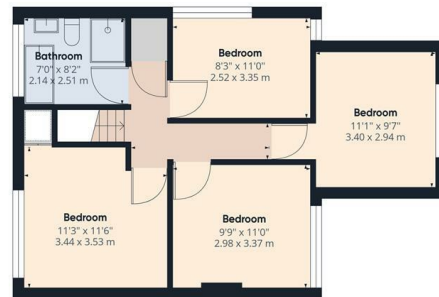
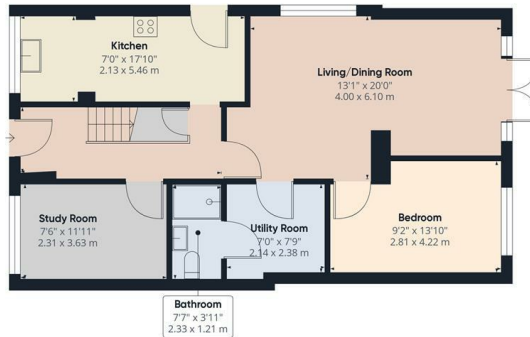
# 19 Hardwick Road

## DESCRIPTION:

VP - NO ONWARD CHAIN & 360 VIRTUAL TOUR

Presented to the market is this extended four/five bedroom semi detached house with off road parking for several cars and within walking distance to local schools, amenities, bus routes and parks. The accommodation comprises entrance hallway, study room, kitchen, utility room, shower room, bedroom and a living/dining room. On the first floor there are four double bedrooms and a bathroom suite. Externally there is side access leading to the rear garden. The garden has a patio/decking area, lawn and three sheds.

Council tax band - D



Approximate total area<sup>a</sup>  
1337.73 ft<sup>2</sup>  
124.28 m<sup>2</sup>

(1) Excluding balconies and terraces

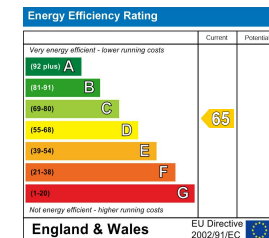
While every attempt has been made to ensure accuracy, all measurements are approximate, not to scale. This floor plan is for illustrative purposes only. Calculations are based on RICS IPMS 3C standard.

GIRAFFE360

## SUMMARY OF ACCOMMODATION:

- NO ONWARD CHAIN
- OFFICE ROOM DOWNSTAIRS
- DOWNSTAIRS SHOWER ROOM
- SIDE ACCESS GATE
- OFF ROAD PARKING FOR SEVERAL CARS
- FOUR/FIVE BEDROOMS
- 360 VIRTUAL TOUR
- SEMI DETACHED
- BRAND NEW HEATING SYSTEM (2 MONTHS OLD)
- UTILITY ROOM

## ADDITIONAL INFO:



## VIEWING STRICTLY BY APPOINTMENT:

T: 0118 941 5607  
E: sales@villageproperties.org  
W: www.villageproperties.co.uk

92 School Road  
Reading  
RG31 5AU

Get Social

