



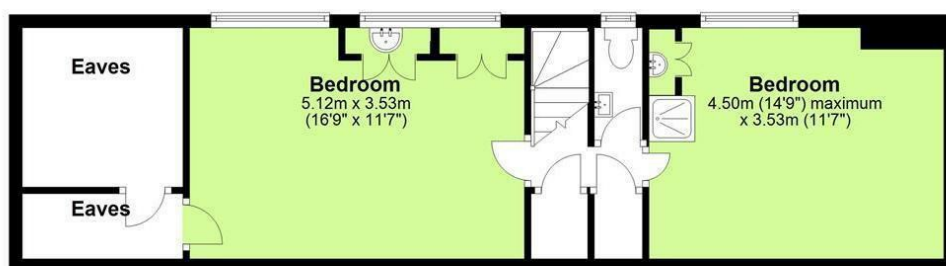
187 City Road, Tilehurst, Reading, RG31 4SL
£2,250 Per calendar month

- DETACHED BUNGALOW
- 4 BEDROOMS
- DOWNSTAIRS BATHROOM
- SHOWER IN UPSTAIRS BEDROOM
- PETS ACCEPTED
- GARAGE
- LARGE GARDEN
- AMPLE OFF ROAD PARKING

Ground Floor



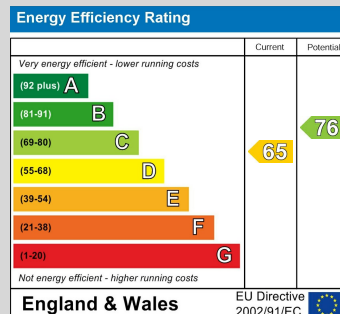
First Floor



PLEASE NOTE FLOORPLAN IS NOT TO SCALE WITH ROUGH MEASUREMENTS AND IS FOR INFORMATION ONLY
Plan produced using PlanUp.

VP - Presented to the market is this well presented detached bungalow situated in a popular location close to Little Heath secondary school and Sulham Woods. Reading and Tilehurst train stations. The property is also within walking distance of frequent bus services and local shops.

The accommodation comprises of entrance hall, a dining room, fitted kitchen, downstairs bathroom, large living room, 2 downstairs bedrooms, upstairs there are 2 further bedrooms (one with a shower and sink) and a separate w/c. Other benefits include garage, ample driveway parking, landscaped rear garden and is available immediately. This property will accept dogs and cats.



INTERESTING INFO

DIRECTIONS

CONTACT

92 School Lane
Tilehurst
RG31 5AU
0118 9433 9000
Nikki@villageproperties.org