



5 Fletcher Court
Theale, RG7 5FH



Guide price £475,000 Freehold

VillageProperties.co.uk

5 Fletcher Court

DESCRIPTION:

VP - Presented to the market is this three bedroom semi-detached house located in the popular village of Theale and within easy access to schools, amenities, train station and M4 Junction 12. The property comprises entrance hallway, living room, WC and a kitchen/dining room. On the first floor there are three generous size bedrooms, bathroom and en suite to the master bedroom.

Externally there is off road parking, side access gate leading you to an enclosed rear garden.

Council tax band - D (West Berkshire)

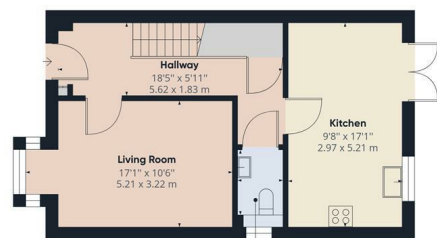
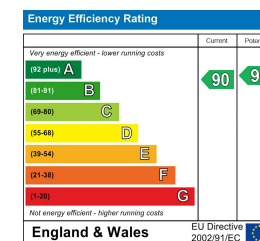
SUMMARY OF ACCOMMODATION:

- THREE BEDROOMS
- SEMI DETACHED
- CUL DE SAC LOCATION
- SIDE ACCESS GATE
- THREE BATHROOMS
- OFF ROAD PARKING
- BUILT IN 2015
- CLOSE TO TRAIN STATION

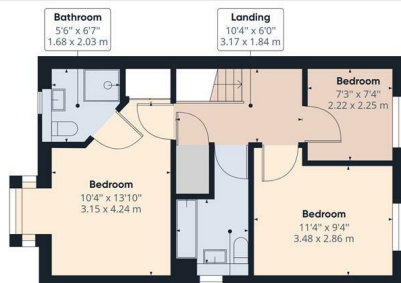
ADDITIONAL INFO:

VIEWING STRICTLY BY APPOINTMENT:

T: 0118 941 5607
E: sales@villageproperties.org
W: www.villageproperties.co.uk



Ground Floor



Floor 1



Approximate total area⁽¹⁾
946.29 ft²
87.91 m²

(1) Excluding balconies and terraces

While every attempt has been made to ensure accuracy, all measurements are approximate, not to scale. This floor plan is for illustrative purposes only.

QIRAFFE360

Get Social



92 School Road
Reading
RG31 5AU